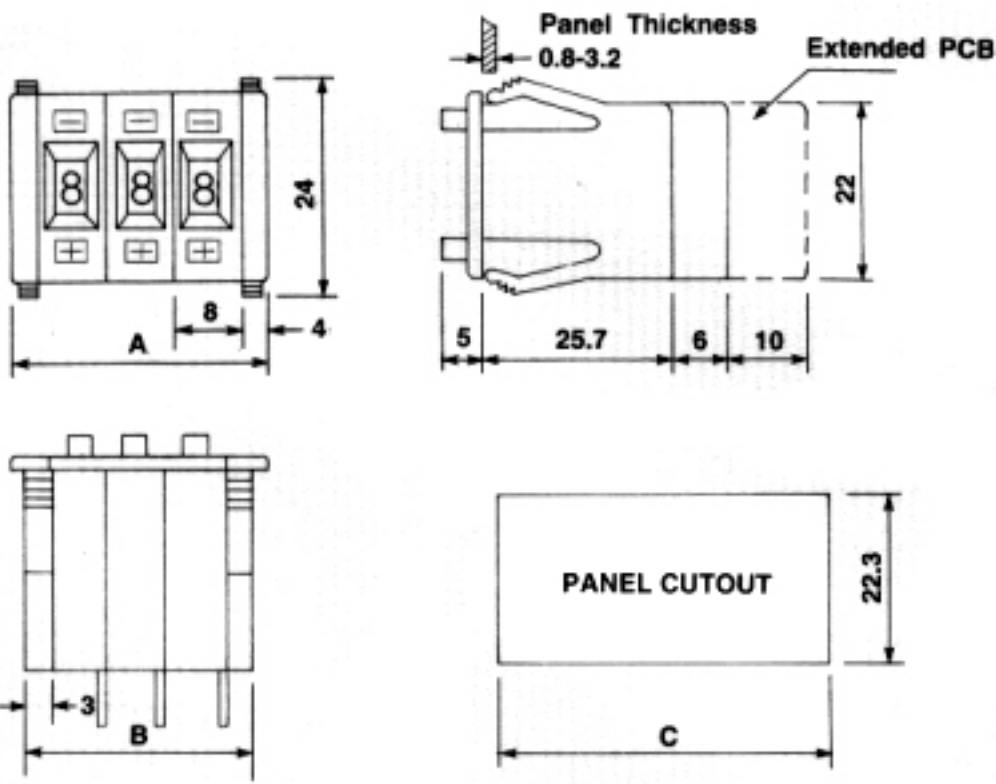


Units: mm
(1mm = 0.03937 in)



For 3mm width of End caps.

$$A = (8 \times N) + 8 \text{ (or } 6)$$

$$B = (8 \times N) + 6 \text{ (or } 3)$$

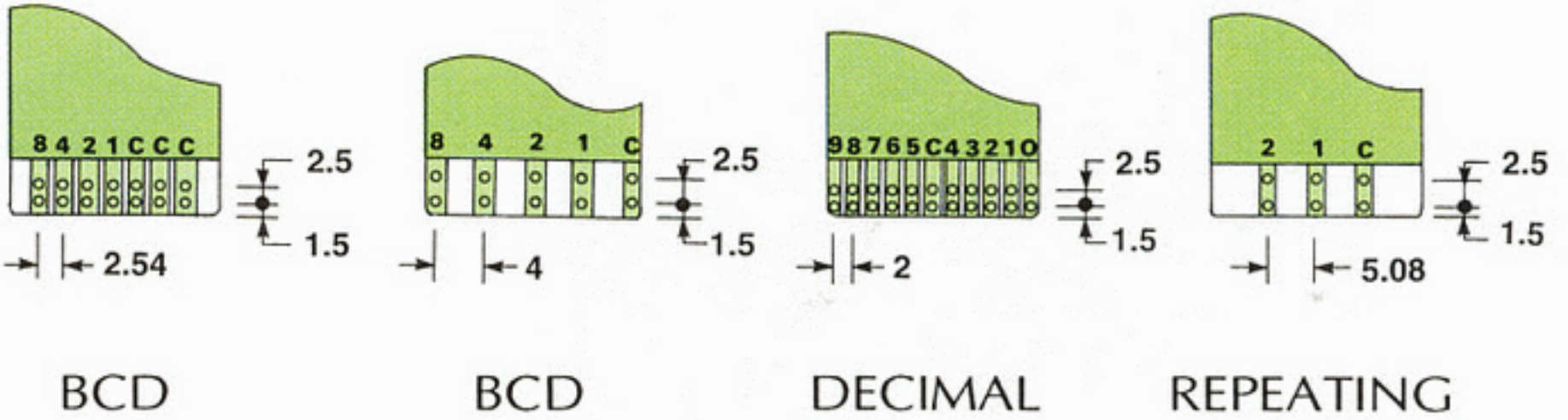
$$C = (8 \times N) + 6.3 \text{ (or } 3.3)$$

N = Number of Sections

This series can also provide a special width (3mm) of End caps.

ORDERING NO. : GPF49 □□□□

OUTPUT TRACE



CODE No : 12

BCD-10 POSITION

SYMBOL	C connected to terminals ●				
	1	2	4	8	C
0					●
1	●				●
2		●			●
3	●	●			●
4			●		●
5	●		●		●
6		●	●		●
7	●	●	●		●
8				●	●
9	●			●	●

CODE No : 14

BCD-16 POSITION

SYMBOL	C connected to terminals ●				
	1	2	4	8	C
0					●
1	●				●
2		●			●
3	●	●			●
4			●		●
5	●		●		●
6		●	●		●
7	●	●	●		●
8				●	●
9	●		●	●	●
A		●		●	●
B	●	●		●	●
C			●	●	●
D	●		●	●	●
E		●	●	●	●
F	●	●	●	●	●